



We would like to see: your support for the Children's Eye Cancer Foundation.

Recognized as a charitable foundation, we are 100% financed from donations and the helpers that work with us volunteer their services. This allows the donations we received to flow directly into the project itself.

What do we provide:

- Advice and help for affected children and their families, especially post-treatment, (meet our soft toy Elli!).
- Awareness campaigns for early detection of retinoblastoma.
- Funding and providing the impetus for research projects.



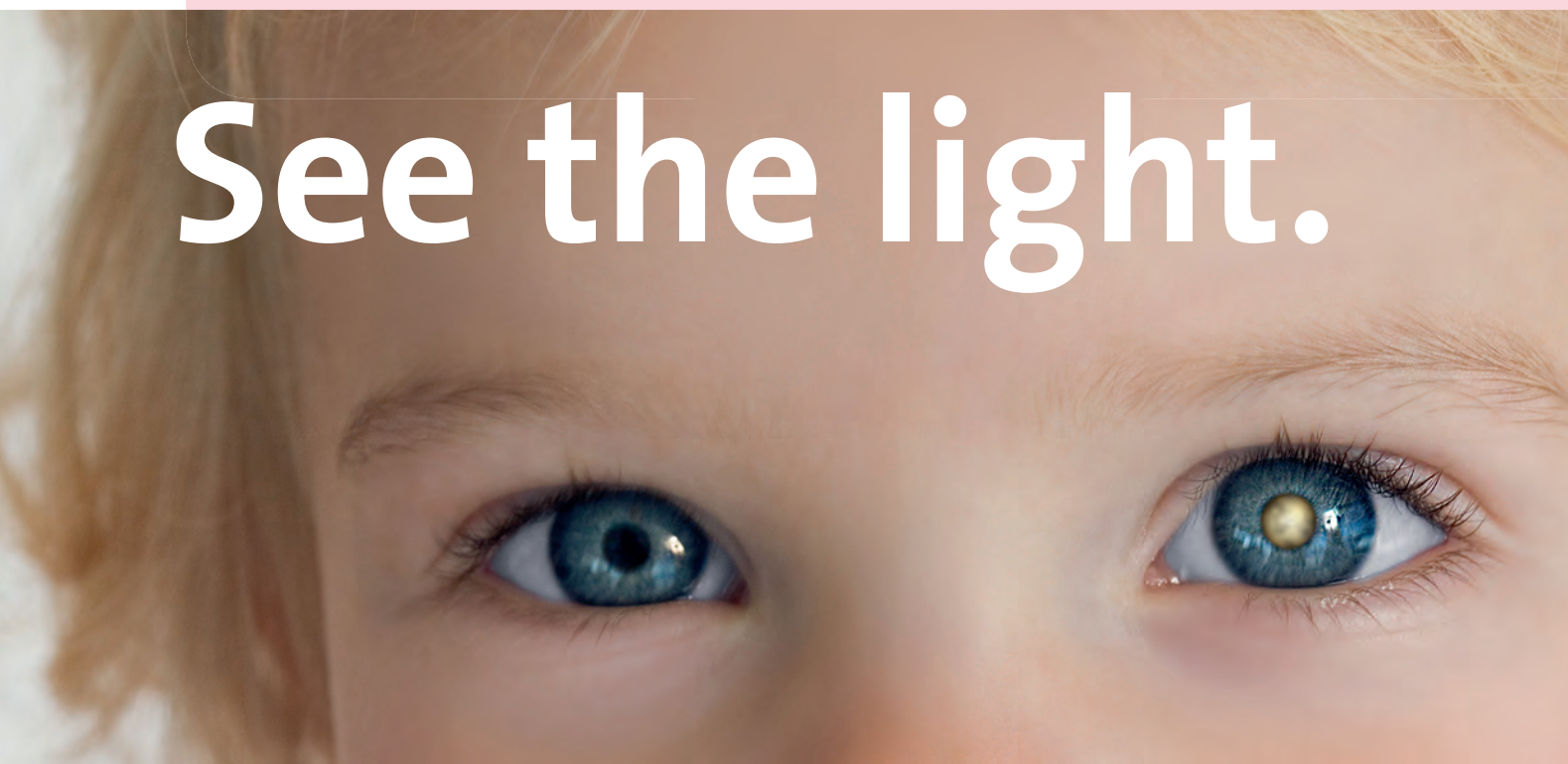
KinderAugenKrebsStiftung

Adenauerallee 134 53113 Bonn, Germany
Telefon 02 28 68 84 60
Fax 02 28 68 84 644
info@kinderaugenkrebsstiftung.de
kinderaugenkrebsstiftung.de

trustee
Deutsche Kinderkrebsstiftung
info@kinderkrebsstiftung.de
kinderkrebsstiftung.de

donation account
IBAN DE17 3705 0198 1902 6319 26
BIC COLSDE33XXX
Sparkasse Köln/Bonn

See the light.



Look closely: eye cancer in children.

A luminous white pupil on the flash photos of your child?

This may be a sign of a malignant eye tumor, commonly called retinoblastoma, a very aggressive tumor which if left untreated can lead to death. It usually occurs within the first five years of life.

If detected and treated early, more than 95% of the affected children can be cured.

For more information:
kinderaugenkrebsstiftung.de.



Look in time: the best prevention for our children.

You do not need to be a clairvoyant to see the cancer itself, in contrast to many other cancers the retinoblastoma is at an early stage very easy to detect: The most common symptom is a luminous white pupil (leukocoria), which under certain light conditions, especially with flash photo-

graphy, is very noticeable. There are other signs that might cause alarm:

- Squinting.
- A red and inflamed eye.
- Dilation of one of the pupils.



If you are unsure?
Then take the RB test at the kinderaugenkrebsstiftung.de, or ask your pediatrician or ophthalmologist.

The yellow/white luminous pupil makes the tumor visible.

Our motivation: to see healthy, happy children.

In November 2009 Monika and Gregor König founded the Children's Eye Cancer Foundation: "We work together with the German Children's Cancer Foundation and various international RB organisations. On a European level we support

the rare diseases initiative and co-operate with renowned specialists, researchers and clinics. Our aim is to educate, inform, and support research to ensure that children remain lively and healthy. "

